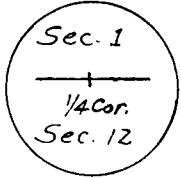


CERTIFIED LAND CORNER RECORDATION

T-14N, R-66-W

DESCRIPTION OF CORNER EVIDENCE FOUND, AND ORIGINAL RECORD (If known)

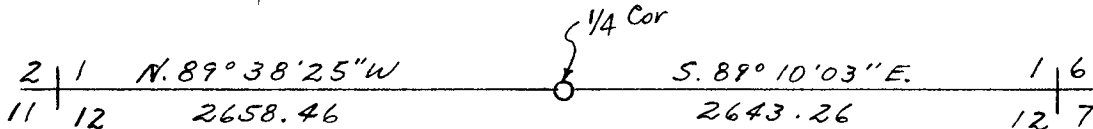


Original Monument described as 16" x 8" x 5" sandstone. Found a well set sandstone 9" x 10" x 4" with weak 4 in north face. Survey indicated location to be compatible with other corners in the area, therefore it was accepted as the corner location.

DESCRIPTION OF MONUMENT AND ACCESSORIES ESTABLISHED TO PERPETUATE THE ORIGINAL LOCATION OF THIS CORNER:

Set a 1 1/2" Iron Pipe with Aluminum Cap marked 1/4 as the corner monument. left the found stone in place as a reference marker.

SKETCH, WITH COURSE AND DISTANCE TO ADJACENT CORNER IF DETERMINED IN THIS SURVEY.
(May Sketch or Paste Reproduction on Reverse Side.)



I, Edward C. Fry certify that I have carefully performed ~~or reviewed~~ the work done on the diagrammed corner as reported on this recordation form and approve the same.

Edward C. Fry P. E., L. S. 662
Signature of Surveyor Registration No.

STATE OF WYOMING,

Office of Clerk and Recorder,

County of Taramie

576604

This "corner record" was filed for record on the 30 day of April, 1980, was noted on the cross-index plat and is assigned page No. _____, in book No. _____.

James C. Whithead
County Official

Cross Index No.	T. _____	R. _____	Mer.
	<u>E 23</u>	<u>14</u>	<u>66</u>
	_____	_____	Mer.
	_____	_____	Mer.
	_____	_____	Mer.
	_____	_____	Mer.
	_____	_____	Mer.
	_____	_____	Mer.